

ESDEMC Career Opportunity - 2021.09

Electrical Engineer (Full time X2)

Responsibilities:

- Working with hardware team on designs from concept, prototype to production.
- Maintain design files and documents, tech supports for products with customers.
- Manage small batch production and inspection of new products with China office team.
- Any other necessary duties assigned by Executive Director.

Qualifications:

- BS or MS or PhD degree in Electrical or Computer engineering is preferred.
- Good knowledge and experience with general circuit & high-speed system design
- Know some programming language such as Python, C
- Experience with EDA tools such as Altium Designer, Circuit Studio, KiCAD, LTSpice, etc.
- Ability to communicate effectively with other design team members.
- Ability to operate instruments, including oscilloscope, network analyzer, LCR, multi-meter, etc.
- Have good technician skill in hardware prototype, such as SMD soldering, drilling, etc.
- Good at drawing, documentation, and management for multi-tasks.
- Multiple languages (Chinese, Korea, etc.,) is a plus.

Compensation and benefits:

- Salary plus bonus
- Holidays, vacation, and personal days
- Health insurance, vision and dental
- Worker's compensation
- Retirement plan
- Tuition reimbursement (with contact)
- Employment authorization sponsorship

Electrical Engineer (Part-time X1)

Responsibilities:

- Working with hardware team on designs from concept, prototype to production.
- Maintain design files and documents, tech supports for products with customers.
- Manage small batch production and inspection of new products with China office team.

Qualifications:

- Good knowledge and experience with general circuit & system design
- Know some programming language such as Python, C
- Experience with EDA tools such as Altium Designer, KiCAD, LTSpice, etc.
- Ability to communicate effectively with other design team members.
- Ability to operate instruments, including oscilloscope, network analyzer, LCR, multi-meter, etc.
- Have good technician skill in hardware prototype, such as SMD soldering, drilling, etc.
- Good at drawing, documentation, and management for multi-tasks.
- Multiple languages (Chinese, Korea, etc.,) is a plus.

Mechanical Engineer (Part-time X1)

Responsibilities:

The Mechanical Engineer will be responsible for design, building, testing, troubleshooting, repairing, and modifying developmental and production mechanical designs, using tools and equipment. Plus, other duties assigned by Director.

Qualifications:

- Good with CAD design tools such as Solidworks, Fusion 360, etc.
- Ability to communicate effectively with other design team members.
- Have some basic technician skill in soldering, drilling, lathe
- Ability to produce quality machining with supplied tools
- Ability to identify different electronic components
- Good with mechanical Tools, including Mill and Lathe, Bandsaw, Laser, 3D Printers

Software Developer (Part-time X1)

We are looking to hire a Software Developer for the application development team. The developer position will focus on developing software applications surrounding the test and measurement industry and applications that interface with a variety of test and measurement equipment such as: oscilloscopes, source meter units, pulse generators, in-house automation, etc. This is a great opportunity to work for a growing electrical engineering firm.

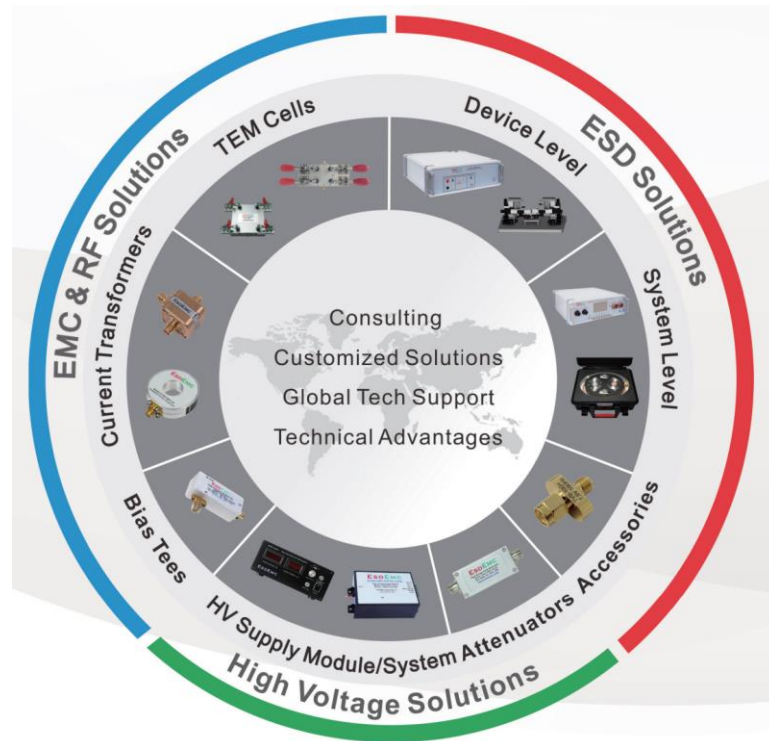
Required Skills/Experience

- Strong understanding of Python
- Strong understanding of object-oriented design principles
- Experience creating sizable applications
- The ability to balance multiple concurrent projects and work well with minimal supervision
- Excellent communication and organizational skills
- Experience in computer science, computer engineering, electrical engineering, or other related fields

Helpful Skills

- Development experience with C++, and embedded systems
- Solid experience with PyQt or the QT design framework
- Experience working with git/github/gitlab etc

About ESDEMC Technology (esdemc.com):



We develop innovative and efficient electrostatic discharge (ESD) and electromagnetic compatibility (EMC) solutions for semiconductor and system customers. Some of our designs are top performance in the industry. We are R&D oriented and fast growing.

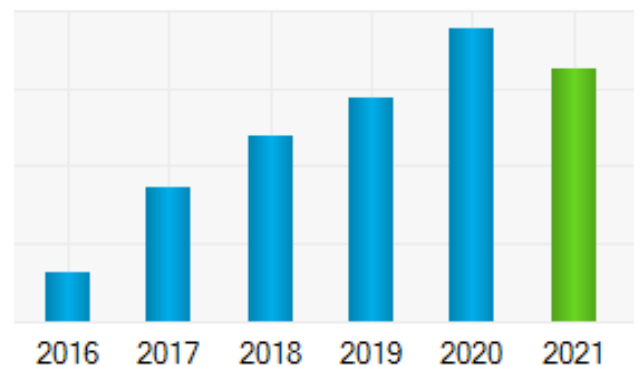
Highly R&D Oriented

Expense %

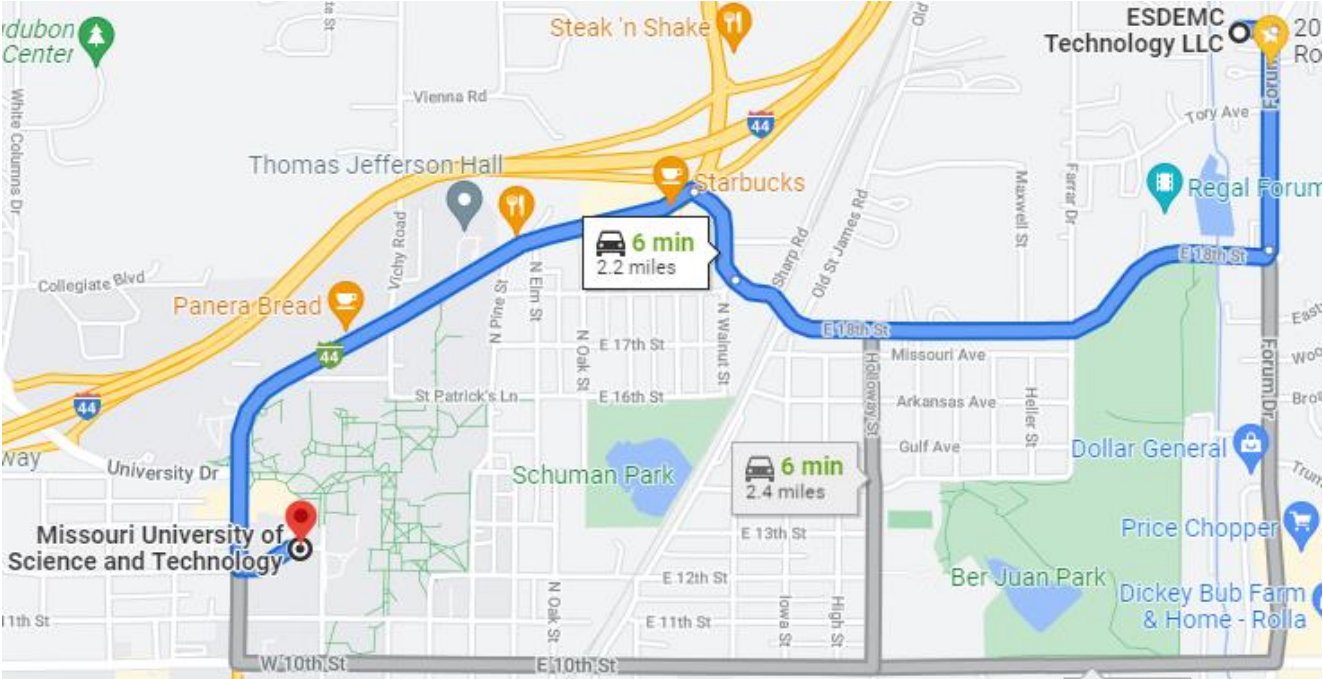


- Development
- Manufacture
- Sales
- Others

30+ % Yearly Growth



Great Location for MS&T Students:



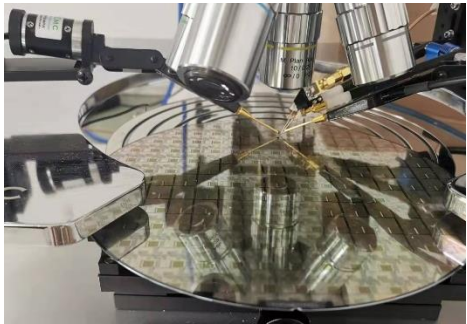
FREE Drinks, Snacks, and Fruits



Well-Equipped R&D Environment:

1. Each employee has a complete set of tools for the projects assigned.
2. **Electrical Instrumentations:**
 - a. **Oscilloscopes X 20+**
Most are real time oscilloscopes ≥ 1 GHz BW, including **23 GHz/100Gs**
2 sampling oscilloscopes including up to **50 GHz TDR**,
different types of passives, high voltage, and active probes.
 - b. **Network Analyzers X 4**
Different ENA/PNA units covering **5 Hz to 26.5 GHz**, 2 and 4 ports
 - c. **Signal Generators X 4**
RF Generators up to **40 GHz**, Arbitrary Waveform Generators
 - d. **Source and Measurement Units X 6+**
Accurate DC parametric sweep down to **fA (1E-15)**
 - e. **Spectrum Analyzer, RF Amplifier & Power Meters**
20 GHz SA, different RF amplifiers and meters
 - f. **LCR Meters and DMM**
4 handheld LCR units, 1 benchtop LCR unit up to 1MHz
Many DMM including **7 ½ digits**.
 - g. **HV Module & System up to 100 kV, Pulse Generators**
3. **Mechanical Equipment (Fast In-house Prototyping):**
 - a. **3 Axis CNC and Lathe X 2**
 - b. **Laser Engraving/Cutting Machines X 2**
 - c. **3D Printers X 5**
 - d. **Plenty tools for woodwork**

Development Resource Pictures



Future Research and Development Topics:

- a. Semiconductor Reliability Test and Analysis
- b. High Voltage Design and Applications
- c. High Speed digital and RF Designs
- d. Robotic Test Automation
- e. Power Electronics

Benefits:

	Part-time	Full-time
Project Bonuses	Yes	Yes
Paid Holidays, Vacation and Personal Days, etc.	Partial	Yes
Paid Health Insurance		Yes
Worker’s Compensation		Yes
Tuition Reimbursement		Yes
Retirement Plan		Yes

Note for F1 Students:

Part-time CPT (<=20 hours/week) during full-time school years is available to practice skills and gain work experience. There is NO 12 months limitation with part-time CPT.

(Full-time CPT is limited to 12 months per degree and usually delays graduation)